



The English Channel

The 4 x 4 of the sea **Targa 25** MK II



Tender

SEVING

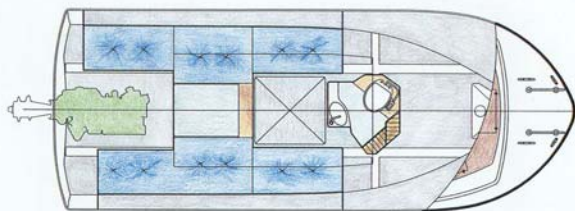
8 23384

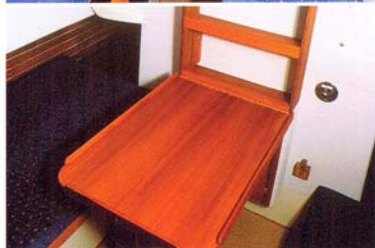
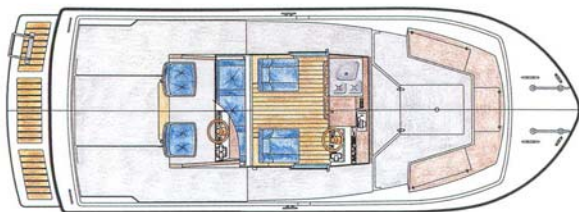
Tender 26

Targa 25_{MK II}

Julius Caesar sailed across the English Channel in 55 BC and admired the white cliffs of Dover. At the time his boat was the best available, designed to carry its crew safely to their destination. Caesar's voyage was one of exploration and self-discovery that took him beyond the horizon.

Now it is Targa's turn to take you on your own voyage of discovery.





Targa 25_{Mk II}

L.o.a.	7,97 m
Length (hull)	7,46 m
Beam	2,80 m
Draught	0,80 m
Weight	approx. 3100 kg
Fuel tank	340 L
Engine	147-231 kW (200-315 HP)
Speed	30 - 37 K.T.
Cruising speed (230 HP)	approx. 28 K.T.
Fuel consumption (230 HP)	approx. 1,6 L/N.M.

Options are shown on the pictures

Targa 25 Mk II

The Targa 25 combines sporty features with the look of a working boat. The result is an impressive combination of practicality enhanced by attention to detail. There is also plenty of power to ensure your trip goes smoothly even in the most difficult of conditions. First rate safety features add the finishing touch to this boat. The Targa 25 allows you to feel at home on the sea.

- Fore and aft self draining decks
- Swimming platform including ladder
- Wide passageways around pilothouse
- Flybridge steering position
- 8 + 2 seats on deck
- Pilothouse with two sliding doors
- U-shaped front seat with storage lockers
- Seat/storage box in front of pilothouse
- Five seats in pilothouse
- Table for four in aft cabin
- 2 + 2 pipe berths in aft cabin

OPTIONAL EQUIPMENT

The following is just some of the equipment available as optional extras:

- Coloured hull / special colours
- Teak deck / seats
- Mast with boom including winch
- Foldaway teak table for fore/aft deck
- Storage box/seat; foldable seats on aft deck
- Toilet with entrance from fore deck
- Pantry equipment: fridge etc
- Bow and stern thrusters
- Aft/fore deck anchoring systems
- 220V chargers/inverters
- Heating system
- Navigation equipment



Targa 25

Targa 25

Jennifer M

Targa 25 MK II



P.O.Box 9
FIN-66101 Malax, Finland

Tel +358 6 211 2200
Fax +358 6 365 1551
www.targa.fi

